

The background features a stark contrast between black and white. Two large, smooth, curved black shapes sweep upwards from the bottom corners, meeting at a sharp point at the top center. This creates a central white, inverted triangular space where the text is located.

# Andaluz

*Design by Boris Bandyopadhyay ® 2025*



*Black Oak*



# *How to place Andaluz in your space:*

- 1. scan QR code with camera*
- 2. experience Andaluz 'live' at home*
- 3. you can see how Andaluz looks in your furnishings & in your rooms*



Place Andaluz BO in the room

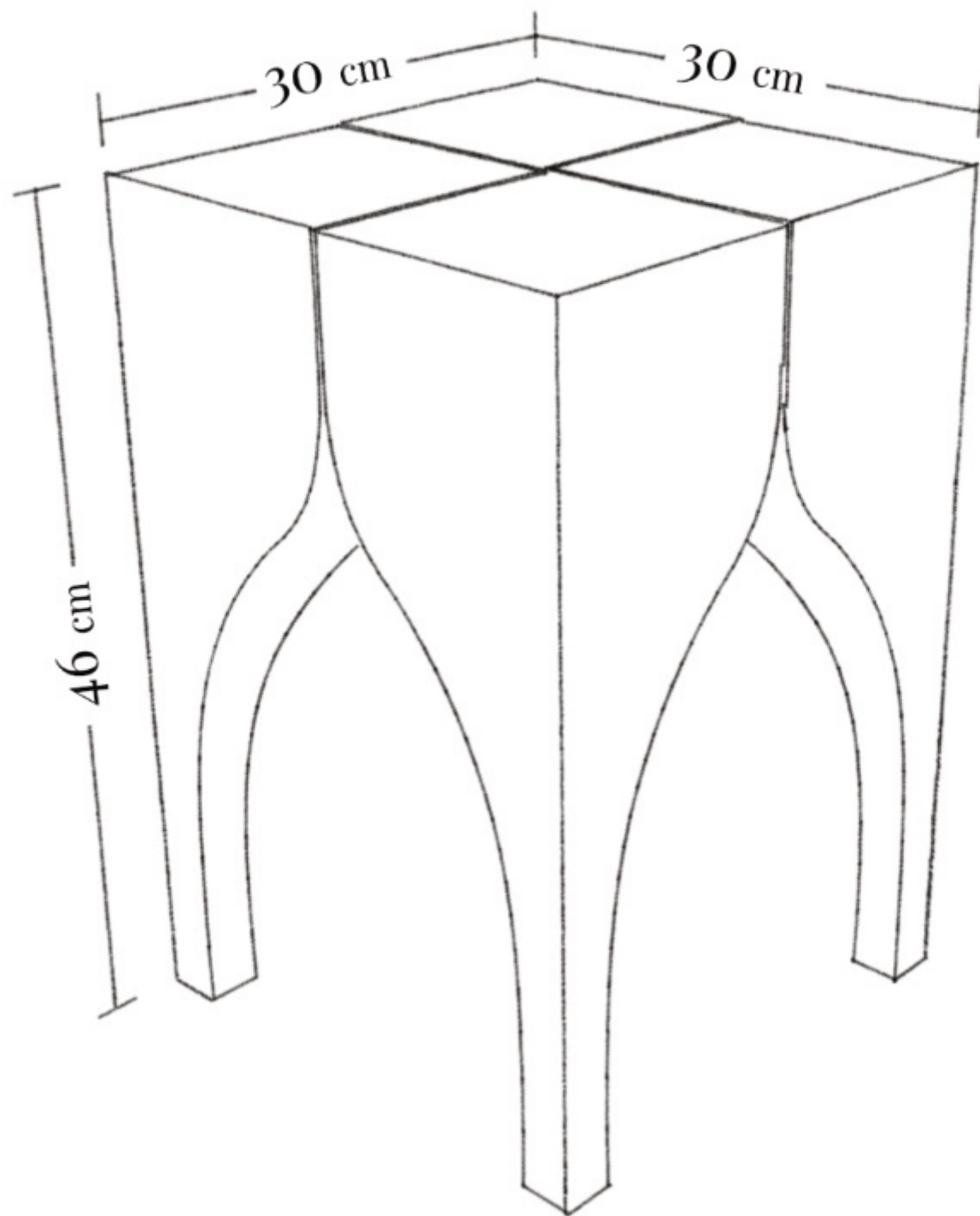


Move & rotate with 2 fingers



*Natural Oak*







Place Andalus NO in the room

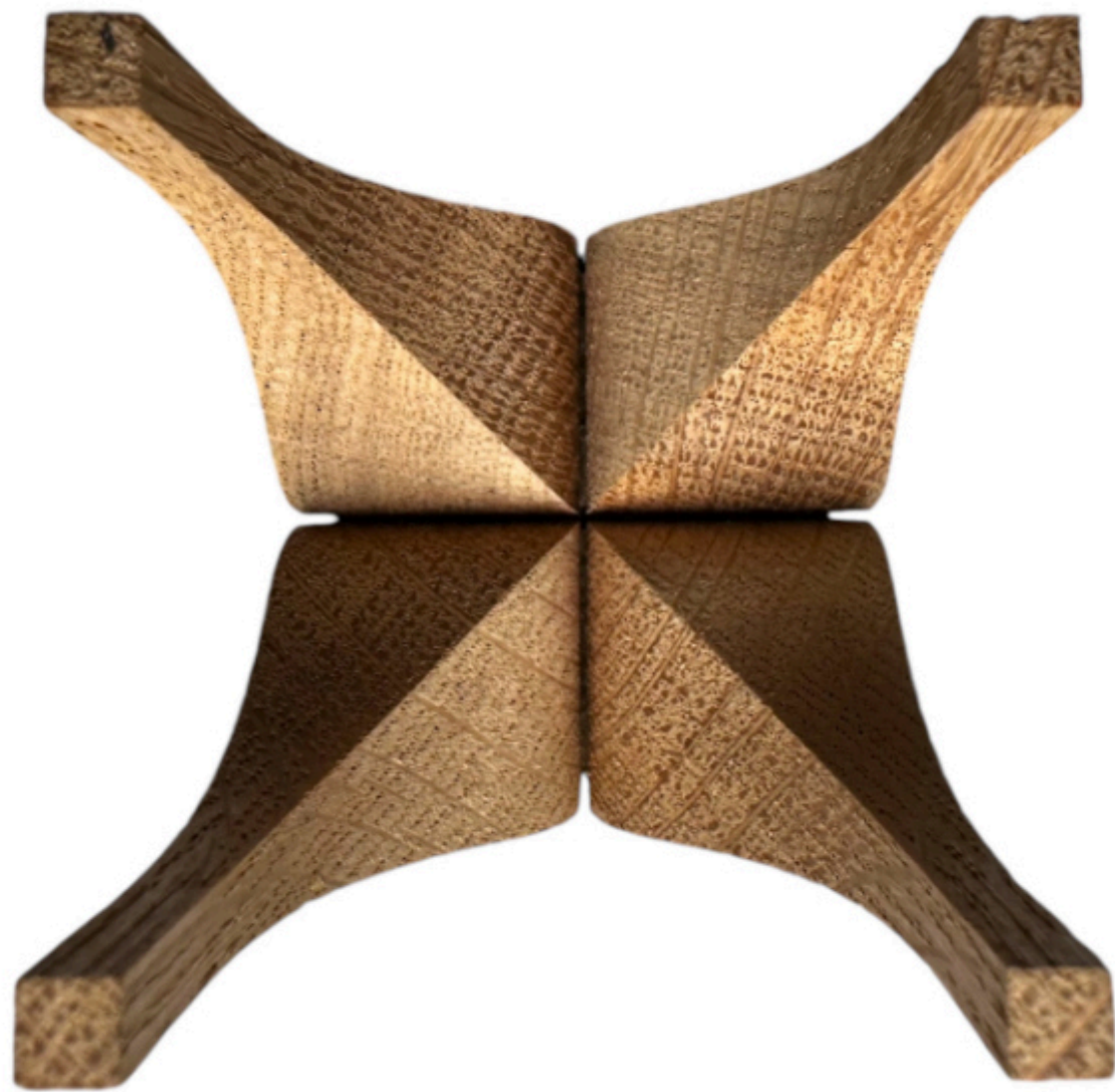






**Lotus Medaillon**, Andrapradesh,  
Indien (2.Jhd. n.Chr.)  
**Sitzender Buddha**, Gandhara,  
Afghanistan/Pakistan (3.Jhd. n.Chr.)  
**Torbogen Freitagsmoschee**,  
Isfahan (8.-11.Jhd n.Chr.)  
**Portal Markusdom** Basilica di San Marco,  
Venedig (829-1094 n.Chr.)  
**Dom St. Bartholomäus**, Westseite Vorhalle  
1869-1880, Frankfurt (13.-16./19.Jhd. n.Chr.)







*Oak White Pigmented*



re



Place Andaluz OWP in the room





1a





# *Oak White Pigmented*



# *Blackforest Pine*





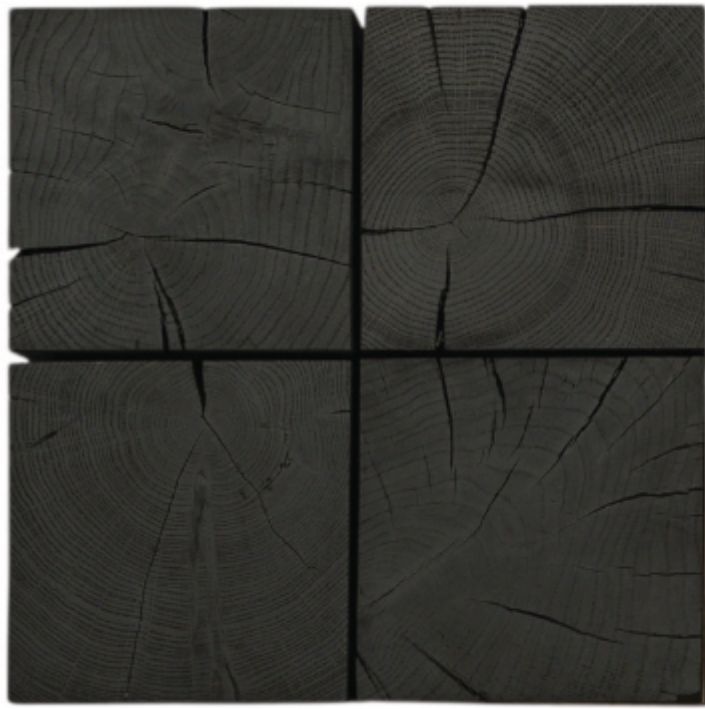
*“Andaluz goes well with minimalist,  
natural furnishing styles with Scandinavian,  
Japanese or Far Eastern influences.”*



Place Andaluz BP in the room











*Concrete for outdoor*



Place Andaluz C in the room





*Marble Calacatta Viola*



Place Andaluz MCV in the room



*Andaluz – An encounter of design,  
culture and craftsmanship.*

*The Andaluz stool and side table is not  
only a versatile piece of furniture for  
modern living environments, but also  
tells a story that transcends cultural  
boundaries and raises the question: What  
connects two cultures? Andaluz combines  
architectural elements from the East with  
cultural symbols of the West.*

*Andaluz' culture-inspired design in the  
form of a stool and multifunctional side  
table, creates a bridge between people,  
cultures and ways of life that have  
influenced each other over the centuries.*

*Al-Andalus is the name of a territory on  
the Iberian Peninsula where Christians,  
Jews and Muslims lived together until  
the 15th century.*